

*[sales@thermafoamrcontrol.com](mailto:sales@thermafoamrcontrol.com)*

ThermaFoam R-Control

---

## **NAILBASE**

## **WALL APPLICATIONS CONSTRUCTION MANUAL**

Note: Information deemed reliable at time of printing.  
Please visit [www.thermafoamrcontrol.com](http://www.thermafoamrcontrol.com) for the latest information.



## WALL APPLICATIONS CONSTRUCTION MANUAL

When you choose R-Control Nailbase, you're collaborating with a team of experts who work with you every step of the way. We're here to answer your questions, solve your problems, and do everything we can to make sure your project proceeds smoothly—and ends successfully.

R-Control products are manufactured by ThermaFoam R-Control, LLC. ThermaFoam R-Control adhere to strict, consistent standards to ensure high-quality.

ThermaFoam R-Control offers architects, designers and builders the best of both worlds: the resources of the country's largest provider of Nailbase products and systems, and the superior attention and customer service of a local supplier.

**Note:** Information deemed reliable at time of printing. Please visit [www.thermafoamrcontrol.com](http://www.thermafoamrcontrol.com) for the latest information. January 2021.

# Table of Contents

## R-Control Nailbase

---

### Details

R-Control Nailbase . . . . .	FC-200
General Notes . . . . .	FC-200a
16 in. o.c. Frame Wall Installation . . . . .	FC-201
24 in. o.c. Frame Wall Installation . . . . .	FC-201a
Concrete Wall Installation . . . . .	FC-201b
Exterior Top of Wall . . . . .	FC-202
Exterior Top of Wall . . . . .	FC-202a
Exterior Bottom of Wall . . . . .	FC-203
Exterior Bottom of Wall . . . . .	FC-203a
Exterior Opening Header . . . . .	FC-204
Exterior Opening Sill . . . . .	FC-205
Exterior Opening Jamb . . . . .	FC-206
Exterior Outside Corner . . . . .	FC-207
Exterior Outside Corner . . . . .	FC-207a
Exterior Inside Corner . . . . .	FC-208
Exterior Inside Corner . . . . .	FC-208a

---

### Technical Bulletins

Fastening to Concrete or Fully-Grouted Concrete Masonry Walls . . . . .	Nailbase No. 4004
Fastening to Concrete or Masonry Walls . . . . .	Nailbase No. 4005
Fastening to Concrete . . . . .	Nailbase No. 4007

# General Recommendations

---

## R-Control Nailbase Sizes

R-Control Nailbase is made in a variety of sizes, most commonly 4' x 8'. Consult ThermaFoam R-Control for sizes, thicknesses, and fabrication services available in your area.

---

## Environmentally Safe

The core material for R-Control Nailbase, R-Control insulation, contains no CFCs, HCFCs, HFCs or formaldehyde and is recyclable. R-Control insulation is inert, non-nutritive and highly stable. ThermaFoam R-Control encourages you to support recycling and energy conservation.

---

## Warranty

ThermaFoam R-Control provide a 50-year warranty covering thermal performance. Contact ThermaFoam R-Control for details regarding the warranty program.

---

## Handling - Storage - Protection

R-Control Nailbase should be stored in a fully supported manner and protected from weather. Cover stored R-Control Nailbase with tarps or similar protective wraps. Exposure 1 OSB facings are used in R-Control Nailbase manufacture; however, panels used for roof systems must have temporary roofing applied at the time of installation. Apply finished roofing when immediately practical.

Metal roof systems have inherent properties that may cause R-Control Nailbase roofs covered with these materials to become hotter than other roof systems. When installing metal roof systems on R-Control Nailbase, additional design considerations may be necessary to protect the roofing underlayment and the R-Control Nailbase from excessive temperatures. These design precautions may include the use of a ventilated air space above the R-Control Nailbase to minimize temperature exposure. Consult ThermaFoam for local recommendations.

Molded polystyrene contains a flame retardant additive. However, the molded polystyrene should be considered combustible and used with code approved thermal barriers and should not be stored near any open flame or source of ignition. Do not install or use molded polystyrene with coal-tar pitch or highly solvent extended mastics, adhesives or sealants. Consult ThermaFoam R-Control for suggested adhesives, sealants, and assembly specifications not otherwise detailed in this manual.

## General Recommendations - cont'd

---

### Low VOC Do-All-Ply and Splines

R-Control Nailbase may be joined as needed using splines. These attachments are made with nails, staples, or screws and Low VOC Do-All-Ply.

Spline Connection and Low VOC Do-All-Ply use shall be as specified by the design professional based upon structure design, climate zone, and moisture vapor analysis.

---

### Vapor Retarders

R-Control Nailbase may require the use of a vapor retarder to ensure long term durable roof structures. Consult with a local design professional for a recommendation.

---

### Special Treatments

R-Control Nailbase can be produced with R-Control insulation with borate that protects the core insulation from potential termite damage. In addition, the OSB facings can be coated with FrameGuard that protects the OSB from mold, mildew and termite damage. Please contact ThermaFoam R-Control to learn about specifications for these special treatments.



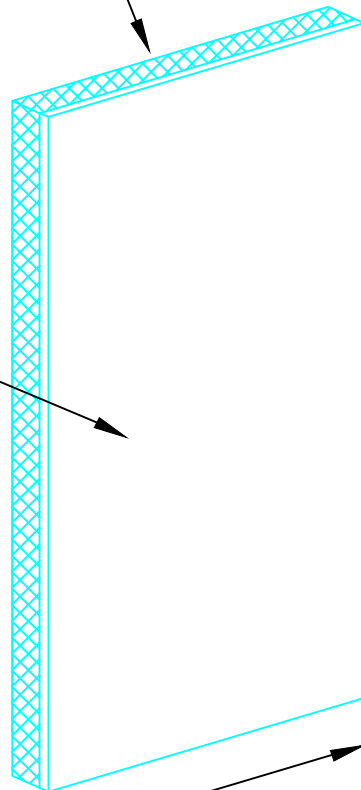
---

### Disclaimer

Details, illustrations, pictures and guidelines provided herein give basic information and illustrate examples of R-Control Nailbase installation. The basic information provided herein is not intended to cover every potential use and application of R-Control Nailbase. It is the responsibility of the installer to become familiar with his specific application and determine if R-Control Nailbase is suitable. By commencing work, the installer accepts full responsibility for the proper and safe installation of R-Control Nailbase at his job site. Adding an insulation component may change the behavior of a roof assembly with regard to air movement, water vapor transmittance, bulk water management and heating, cooling and ventilation systems. It is the responsibility of the owner or the owner's representative to design the insulated roof assembly to perform in a manner ensuring function and durability. Furthermore, it is the sole responsibility of the installer to meet all federal and local regulatory requirements for job site safety for himself, his workers and any others on the job site while in the execution of all phases of R-Control Nailbase installation.

ASTM C578 Type I  
Thickness Varies

Oriented Strand Board  
(OSB) DOC-PS2  
EXPOSURE 1  
7/16" Typical



8', 9', 10'  
Length Typical

4' Width Typical

SECTION

SCALE: NTS

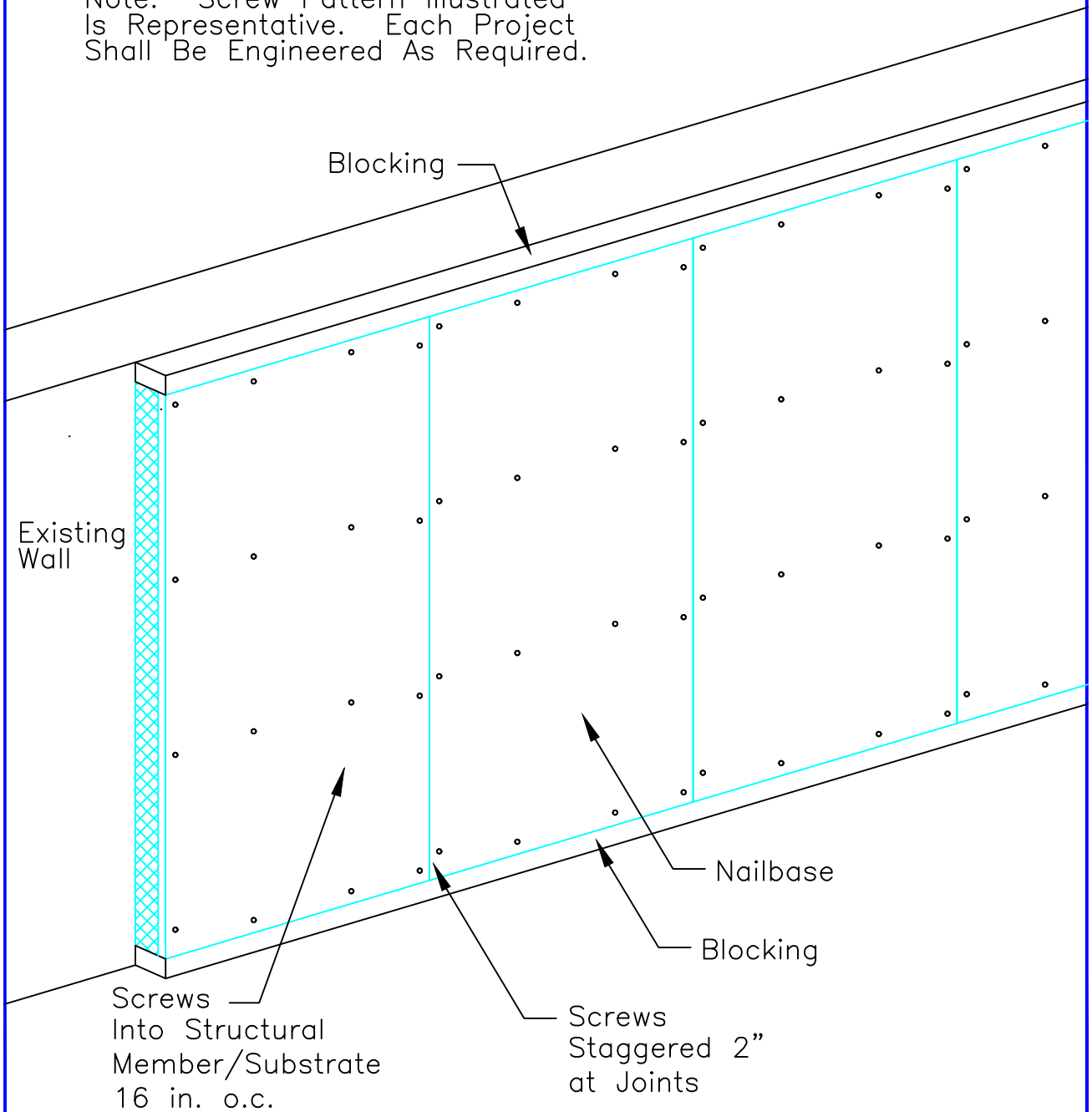
Updated 6-1-20

Nailbase

TITLE:  
Nailbase

NO.  
NB-200

Note: Screw Pattern Illustrated  
Is Representative. Each Project  
Shall Be Engineered As Required.



**SECTION**

SCALE: NTS

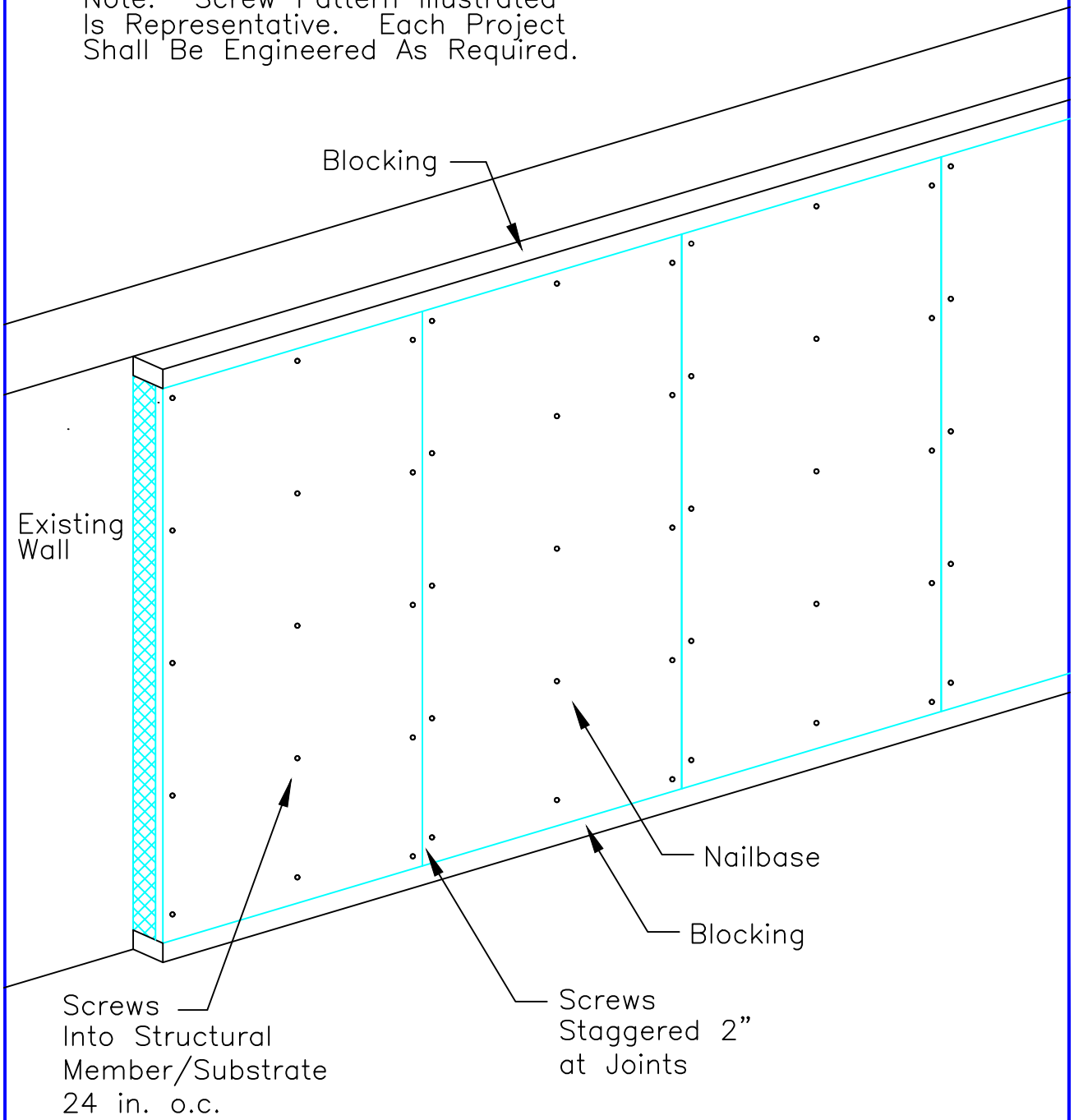
Updated 6-1-20

**Nailbase**

TITLE: 16 in. o.c.  
FRAMED WALL INSTALLATION

NO.  
NB-201

Note: Screw Pattern Illustrated  
Is Representative. Each Project  
Shall Be Engineered As Required.



**SECTION**

SCALE: NTS

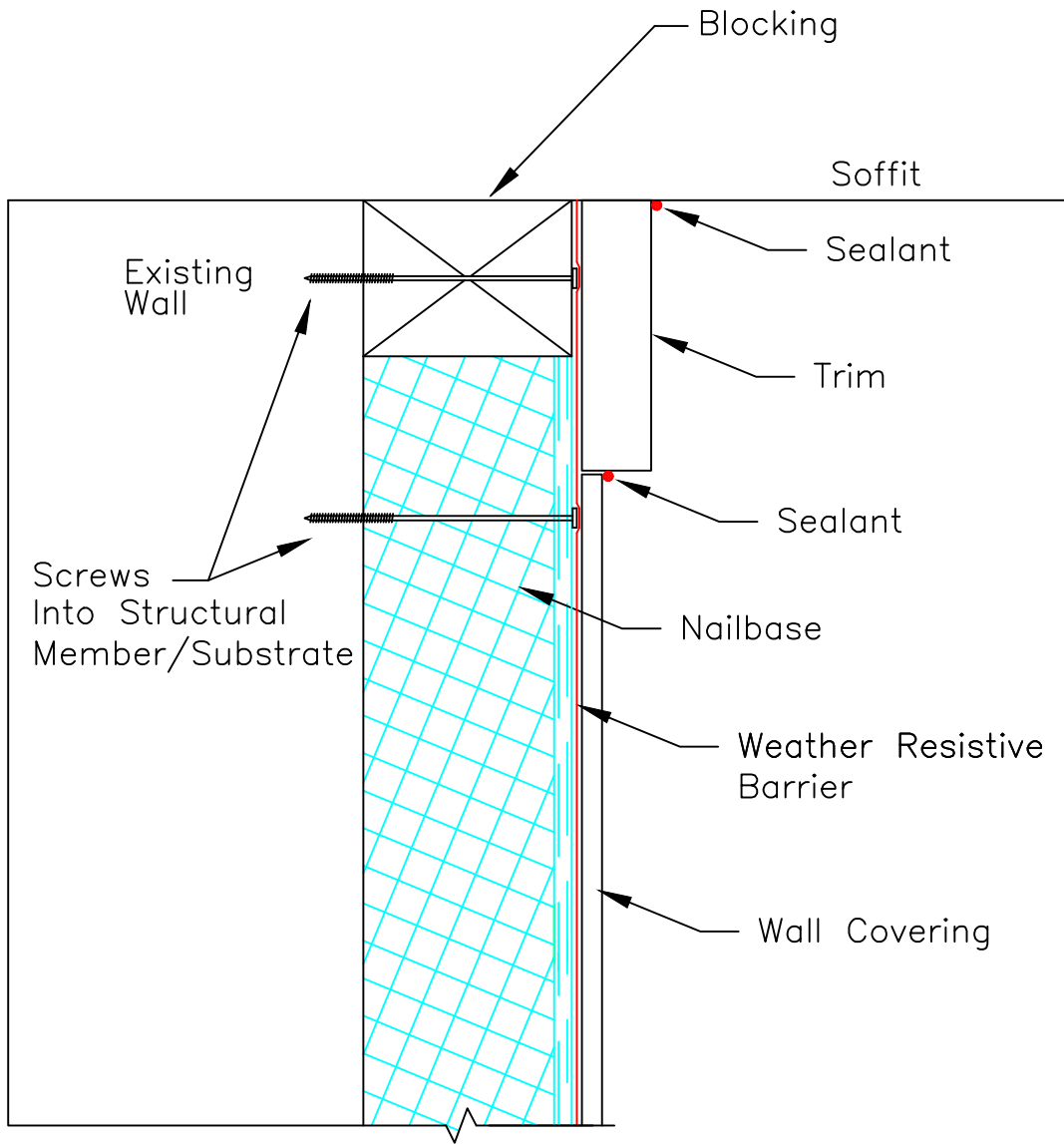
Updated 6-1-20

**Nailbase**

TITLE: 24 in. o.c.  
FRAMED WALL INSTALLATION

NO.  
NB-201a





**SECTION**

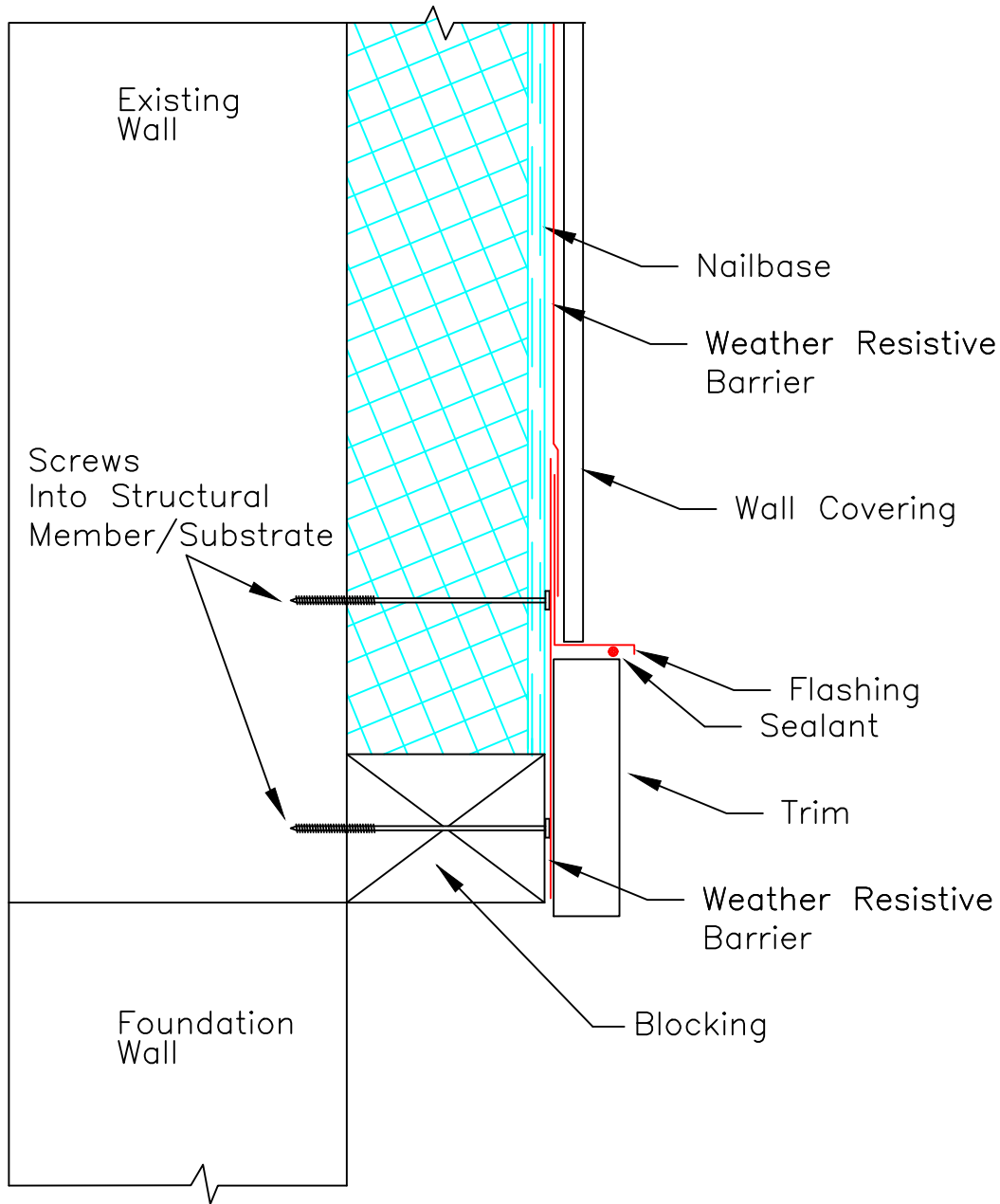
SCALE: NTS

Updated 6-1-20

**Nailbase**

TITLE:  
EXTERIOR TOP OF WALL

NO.  
NB-202



**SECTION**

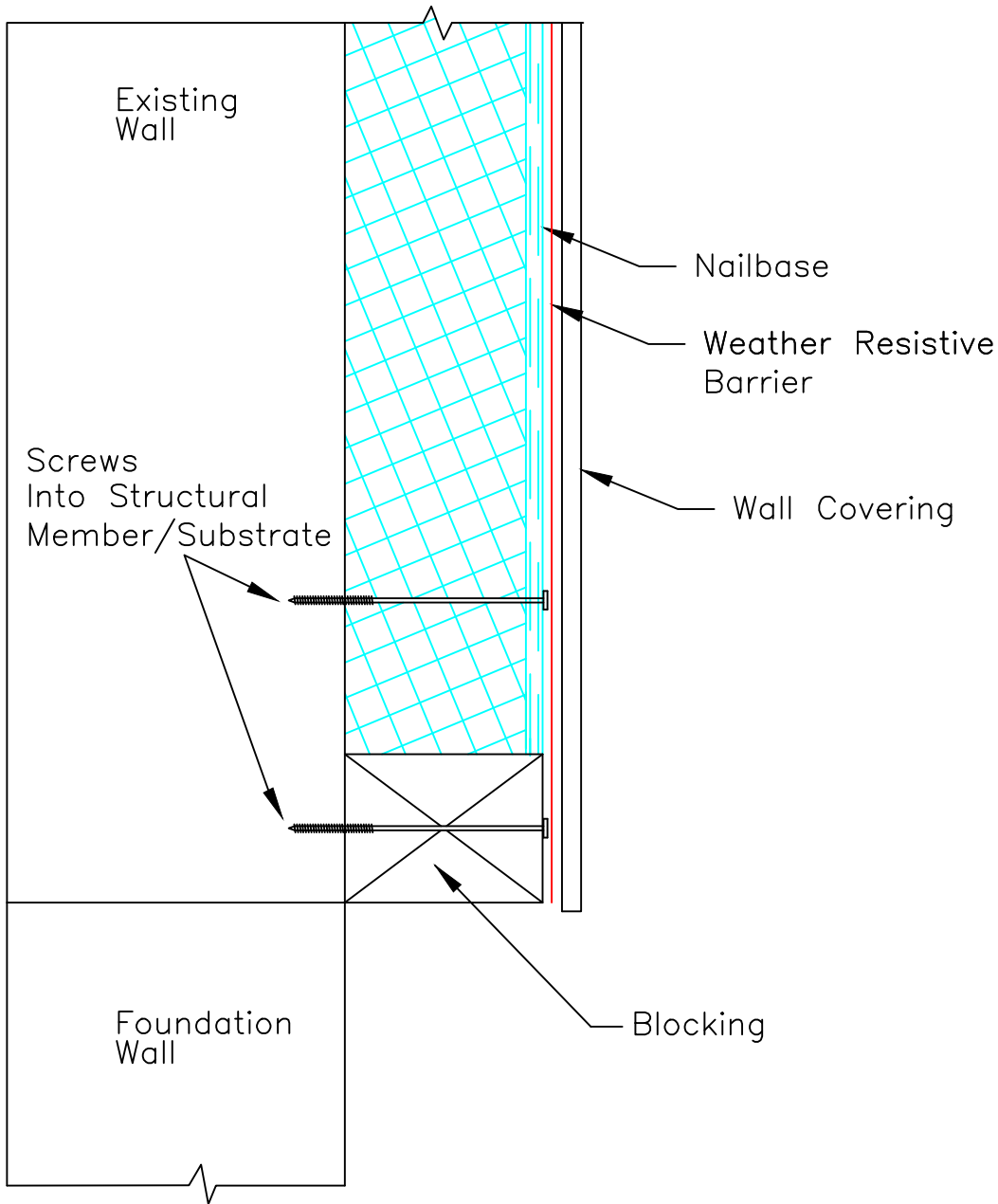
SCALE: NTS

Updated 6-1-20

**Nailbase**

TITLE:  
EXTERIOR BOTTOM OF WALL

NO.  
NB-203



**SECTION**

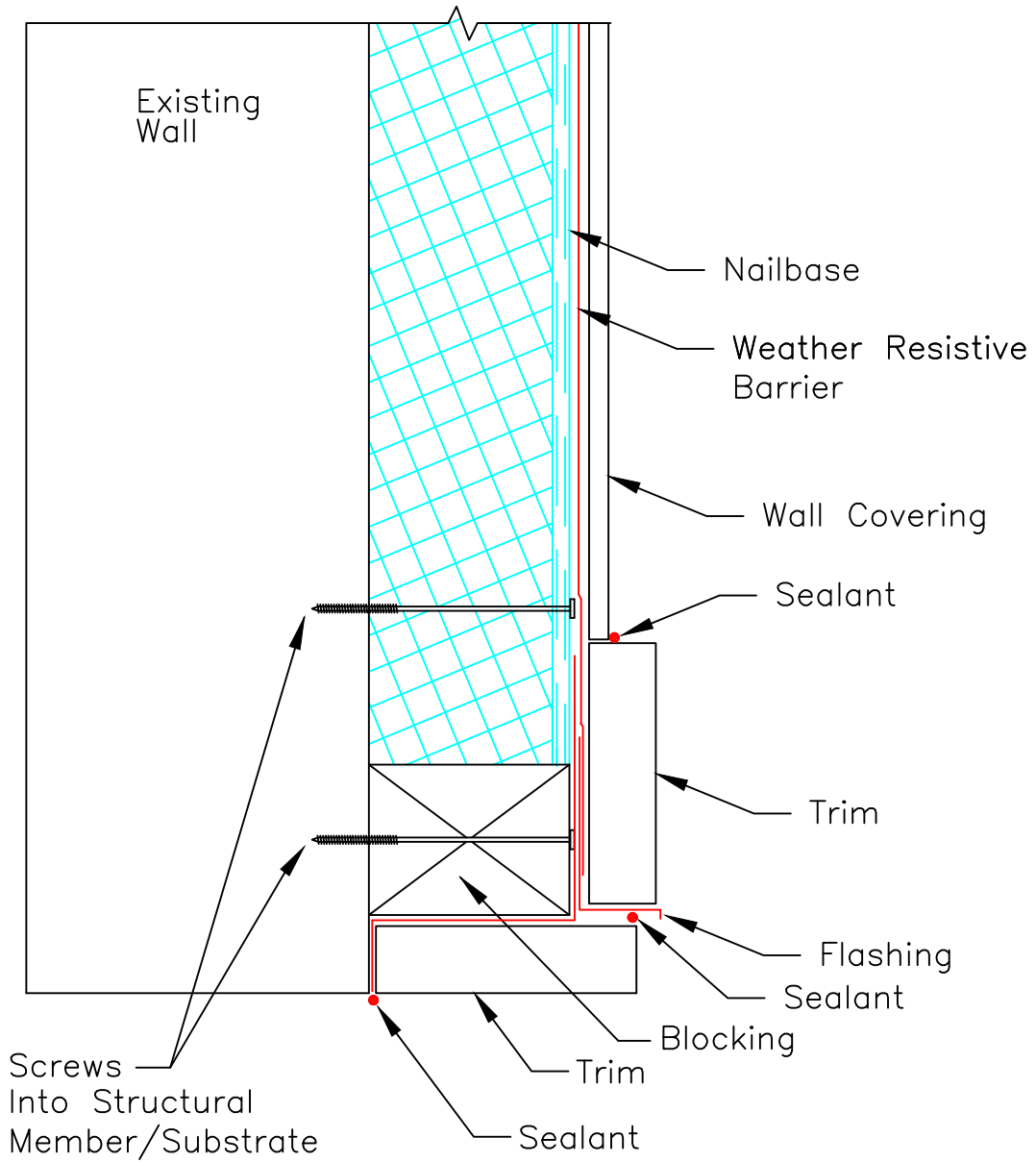
SCALE: NTS

Updated 6-1-20

**Nailbase**

TITLE:  
EXTERIOR BOTTOM OF WALL

NO.  
NB-203a



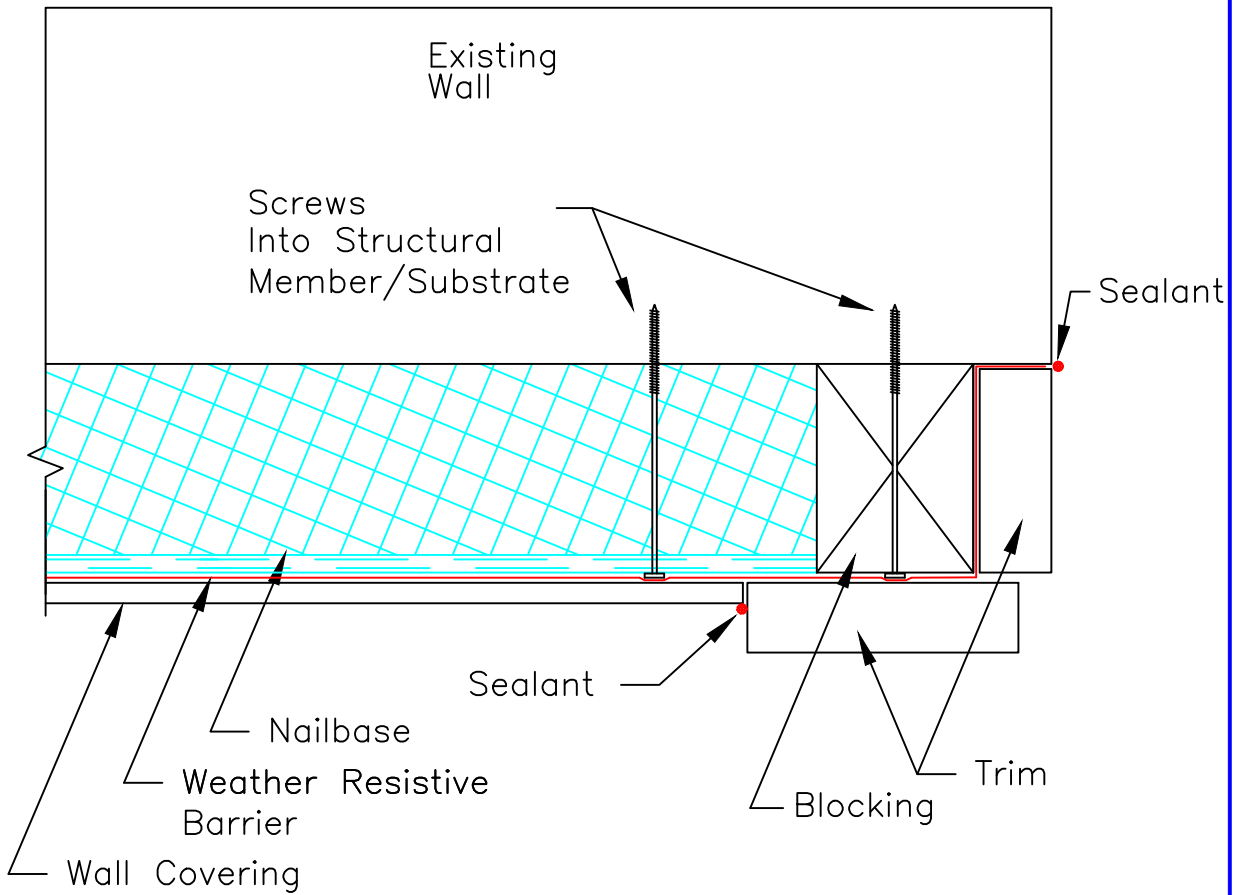
**SECTION**  
 SCALE: NTS

Updated 6-1-20

**Nailbase**

TITLE:  
 EXTERIOR OPENING HEADER

NO.  
 NB-204



**SECTION**

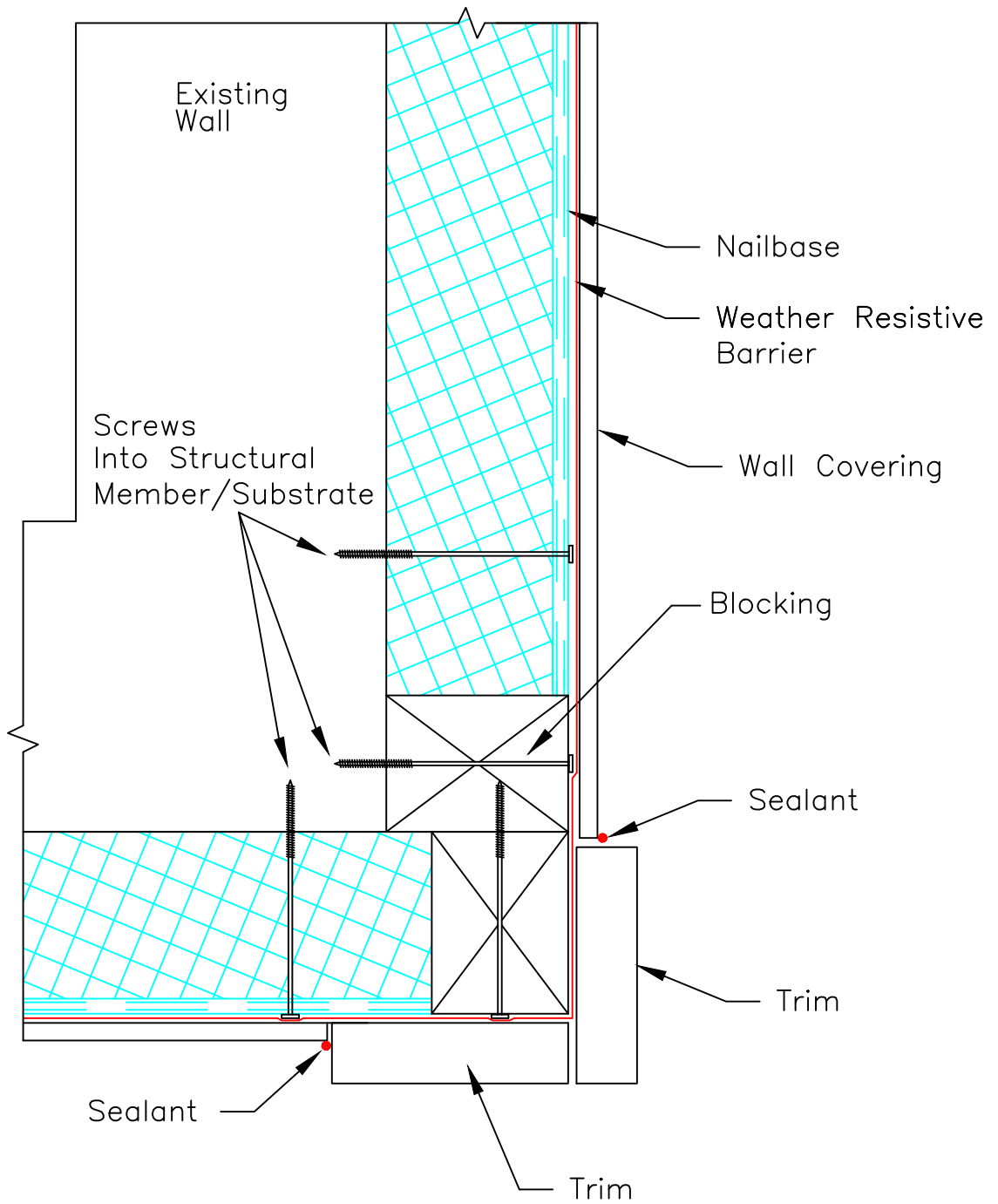
SCALE: NTS

Updated 6-1-20

**Nailbase**

TITLE:  
EXTERIOR OPENING JAMB

NO.  
NB-206



**SECTION**

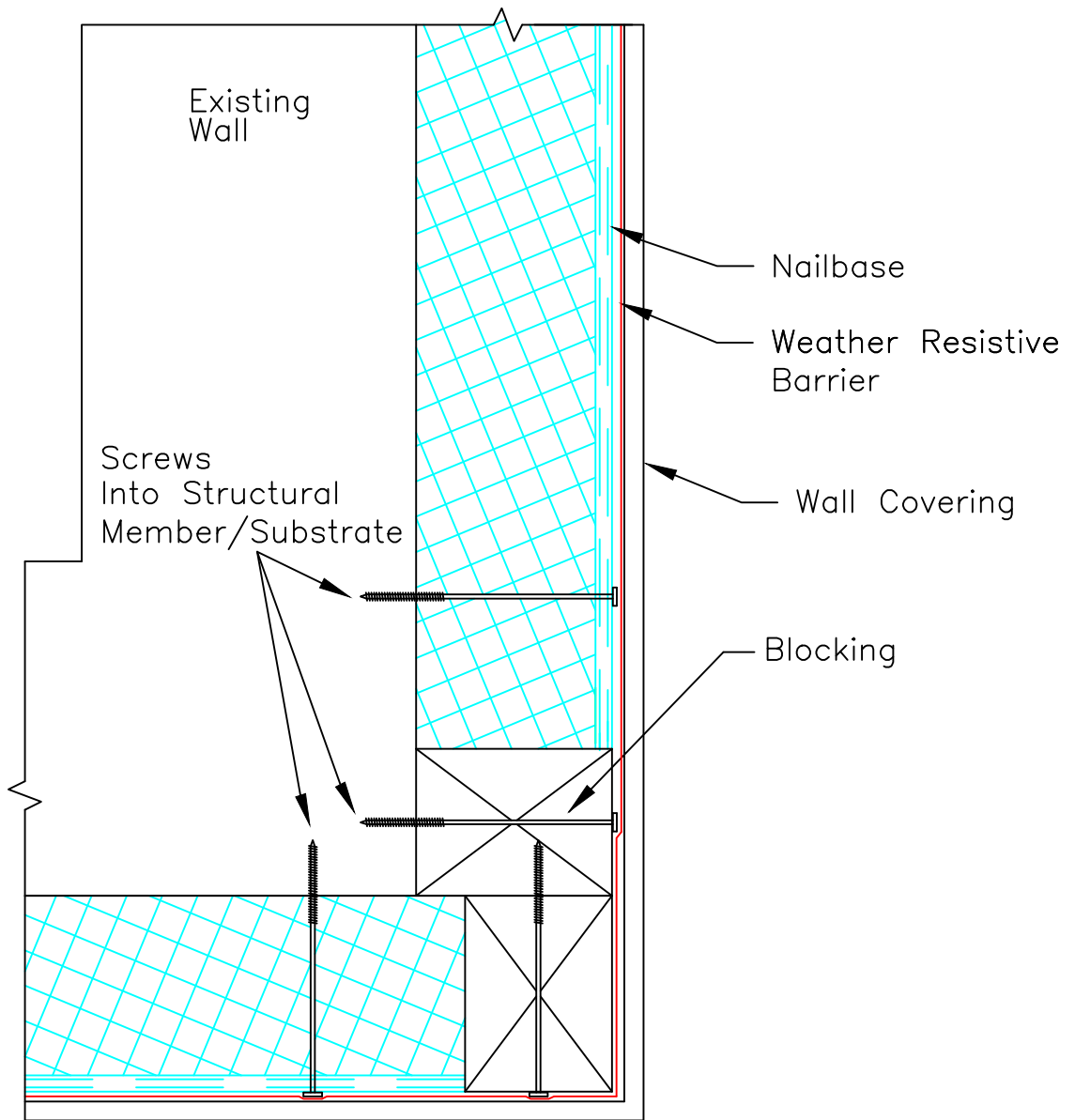
SCALE: NTS

Updated 6-1-20

**Nailbase**

TITLE:  
EXTERIOR OUTSIDE CORNER

NO.  
NB-207



**SECTION**

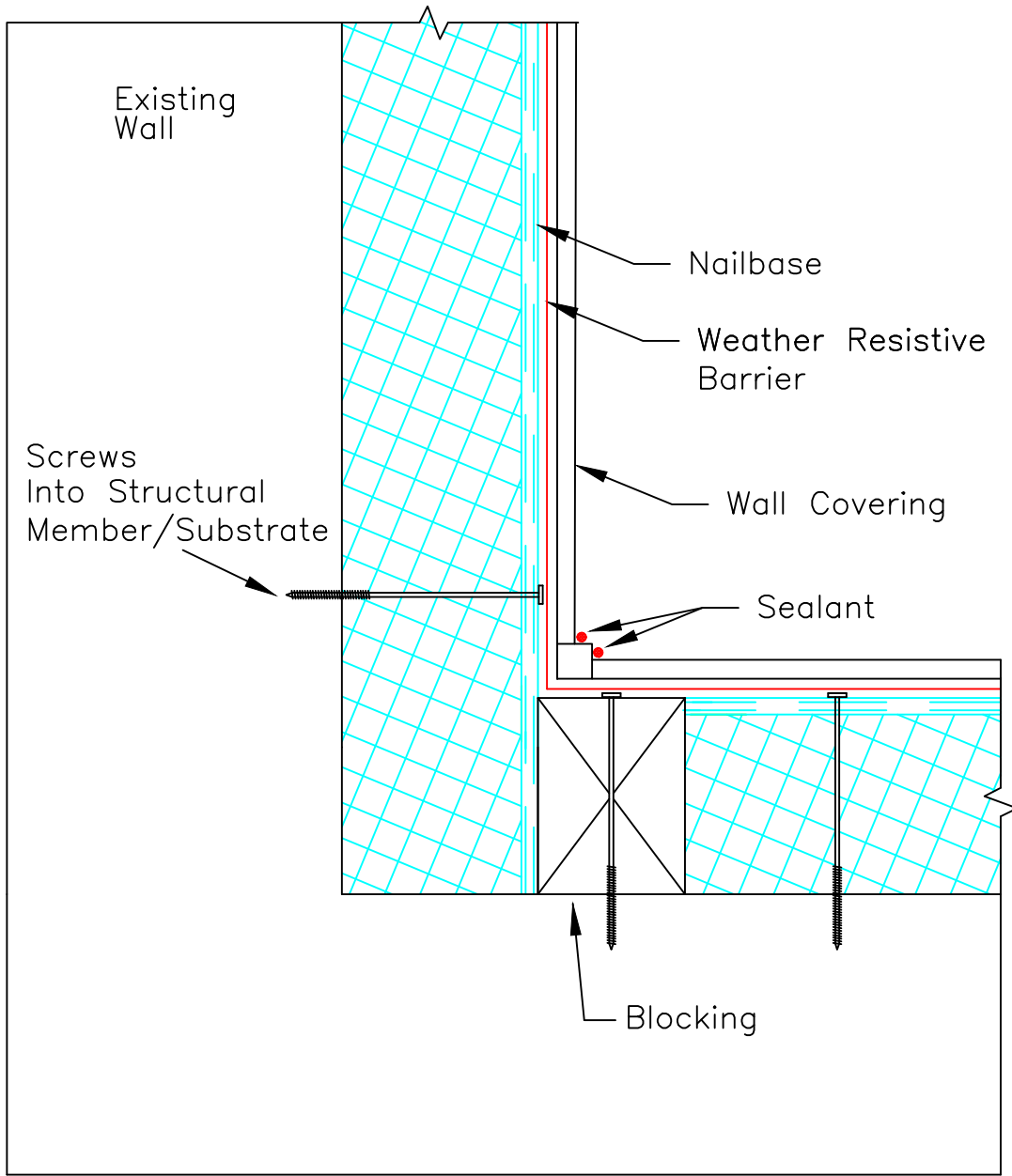
SCALE: NTS

Updated 6-1-20

**Nailbase**

TITLE:  
EXTERIOR OUTSIDE CORNER

NO.  
NB-207a



**SECTION**  
 SCALE: NTS

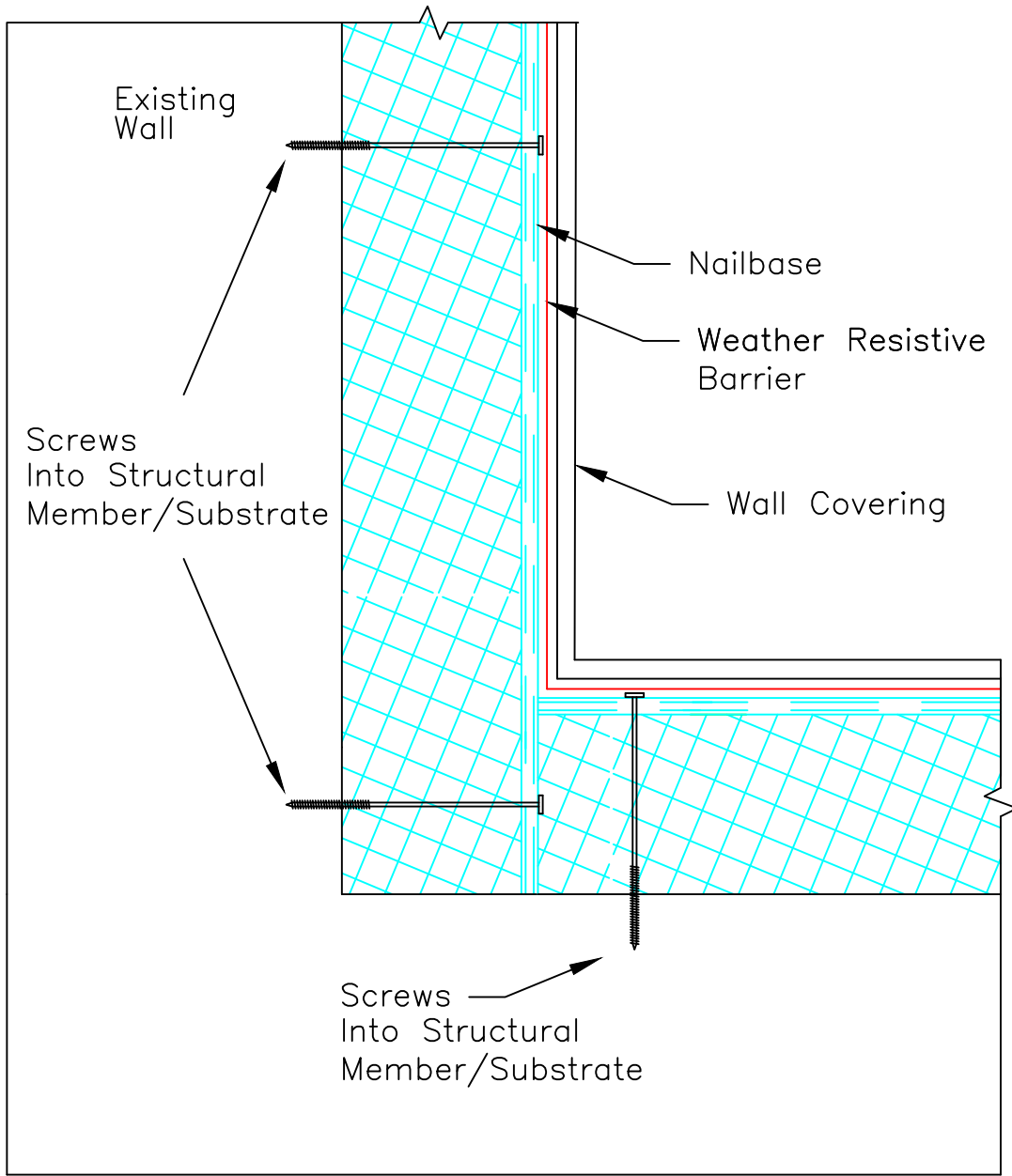
Updated 6-1-20

**Nailbase**

TITLE:  
 EXTERIOR INSIDE CORNER

NO.  
 NB-208





**SECTION**

SCALE: NTS

Updated 6-1-20

**Nailbase**

TITLE:  
EXTERIOR INSIDE CORNER

NO.  
NB-208a

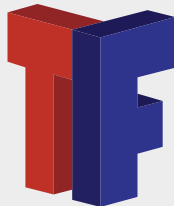
**Product Availability and Support.**

ThermaFoam R-Control Nailbase is supported by a team of experts who work with you to answer your questions, offer solutions, and do everything they can to make sure your project goes smoothly and ends successfully.

**Ready to take control? Start here.**

If you're ready to have ThermaFoam R-Control Nailbase contribute to your next project, just contact your ThermaFoam R-Control Technical Sales Representative. We will be happy to give you design consultation, information about ThermaFoam R-Control products, pricing, and answers to all of your questions.

**NEED INFORMATION OR A QUOTE**



***sales@thermafoamrcontrol.com***  
***www.thermafoamrcontrol.com***



**203 South Redmond Road  
Jacksonville, AR 72076**

**Office: 501-945-1114**